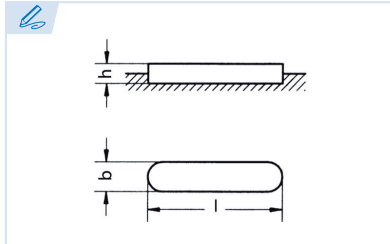




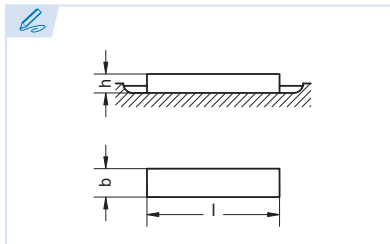
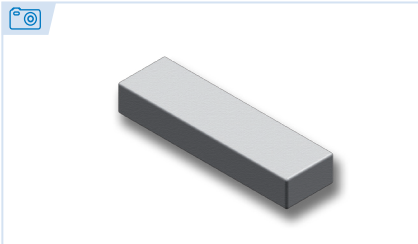
DIN 6885 / DIN 6886



DIN 6885 A

Chaveta paralela - Forma A
Parallel Key - Form A
Clavette parallèle - Forme A
Chaveta paralela - Forma A

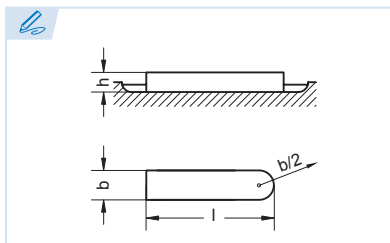
Extremos redondeados (2)
Round Ends (2)
Bouts ronds (2)
Extremidades arredondadas (2)



DIN 6885 B

Chaveta paralela - Forma B
Parallel Key - Form B
Clavette parallèle - Forme B
Chaveta paralela - Forma B

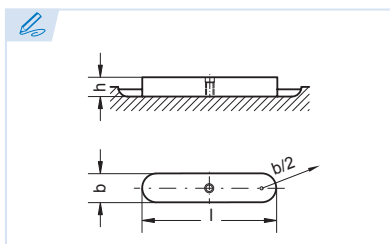
Extremos rectos (2)
Square Ends (2)
Bouts droits (2)
Extremidades retas (2)



DIN 6885 AB

Chaveta paralela - Forma AB
Parallel Key - Form AB
Clavette parallèle - Forme AB
Chaveta paralela - Forma AB

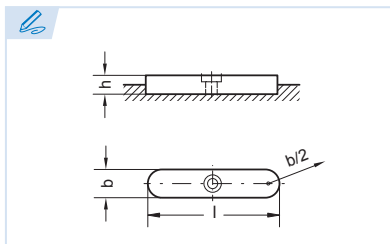
Extremo redondeado (1) y extremo recto (1)
Round End (1) and Square End (1)
Bout rond (1) et bout droit (1)
Extremidade arredondada (1) e extremidade reta (1)



DIN 6885 AE

Chaveta paralela - Forma AE
Parallel Key - Form AE
Clavette parallèle - Forme AE
Chaveta paralela - Forma AE

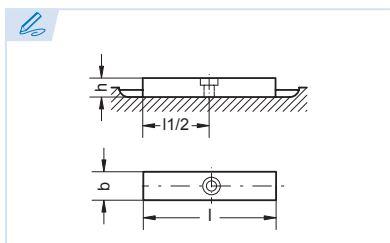
Extremos redondeados (2) y agujero para extracción
Round Ends (2) and a Hole for Extraction
Bouts ronds (2) et trou pour démontage
Extremidades arredondadas (2) e furo para extração



DIN 6885 C

Chaveta paralela - Forma C
Parallel Key - Form C
Clavette parallèle - Forme C
Chaveta paralela - Forma C

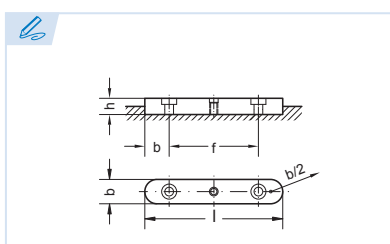
Extremos redondeados (2) y tornillo de retención
Round Ends (2) and a Retention Bolt
Bouts ronds (2) et taraudage pour vis de retenue
Extremidades arredondadas (2) e parafuso de retenção



DIN 6885 D

Chaveta paralela - Forma D
Parallel Key - Form D
Clavette parallèle - Forme D
Chaveta paralela - Forma D

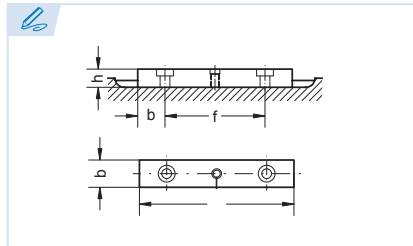
Extremos rectos (2) y tornillo de retención
Square Ends (2) and a Retention Bolt
Bouts droits (2) et taraudage pour vis de retenue
Extremidades retas (2) e parafuso de retenção



DIN 6885 E

Chaveta paralela - Forma E
Parallel Key - Form E
Clavette parallèle - Forme E
Chaveta paralela - Forma E

Extremos redondeados (2), tornillos de retención (2) y extractor (1)
Round Ends (2), Retention Bolts (2) and an Extractor (1)
Bouts ronds (2), taraudages pour vis de retenue (2) et trou pour démontage (1)
Extremidades arredondadas (2), parafusos de retenção (2) e extrator (1)

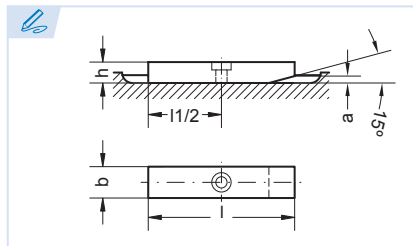


DIN 6885 F

Chaveta paralela - Forma F

Parallel Key - Form F
Clavette parallèle - Forme F
Chaveta paralela - Forma F

Extremos rectos (2), tornillos de retención (2) y extractor (1)
Square Ends (2), Retention Bolts (2) and an Extractor (1)
Bouts droits (2), taraudages pour vis de retenue (2) et trou pour démontage (1)
Extremidades retas (2), parafusos de retenção (2) e extrator (1)

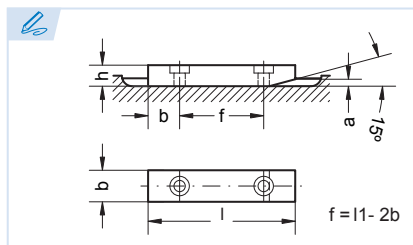


DIN 6885 G

Chaveta paralela - Forma G

Parallel Key - Form G
Clavette parallèle - Forme G
Chaveta paralela - Forma G

Extremos rectos (2), tornillo de retención (1) y chaflán (1)
Square Ends (2), Retention Bolts (1) and a Chamfer (1)
Bouts droits (2), taraudage pour vis de retenue (1) et chanfrein d'entrée (1)
Extremidades retas (2), parafusos de retenção (1) e chanfro (1)

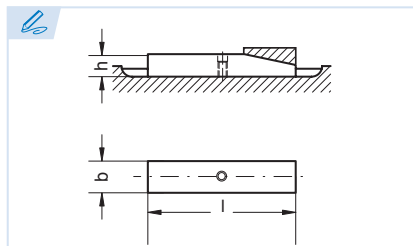
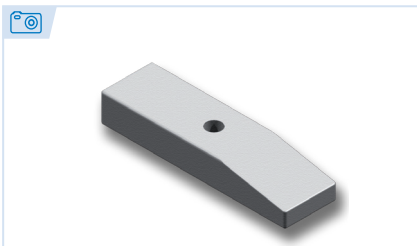


DIN 6885 H

Chaveta paralela - Forma H

Parallel Key - Form H
Clavette parallèle - Forme H
Chaveta paralela - Forma H

Extremos rectos (2), tornillos de retención (2) y chaflán (1)
Square Ends (2), Retention Bolts (2) and a Chamfer (1)
Bouts droits (2), taraudages pour vis de retenue (2) et chanfrein d'entrée (1)
Extremidades retas (2), parafusos de retenção (2) e chanfro (1)

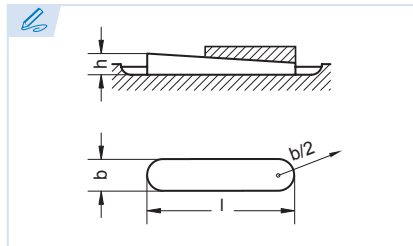


DIN 6885 J

Chaveta paralela - Forma J

Parallel Key - Form J
Clavette parallèle - Forme J
Chaveta paralela - Forma J

Extremos rectos (2), agujero para pasador elástico (1) y chaflán (1)
Square Ends (2), Spring Pin Hole (1) and a Chamfer (1)
Bouts droits (2), trou central pour goupille élastique (1) et chanfrein d'entrée (1)
Extremidades retas (2), furo para passador elástico (1) e chanfro (1)

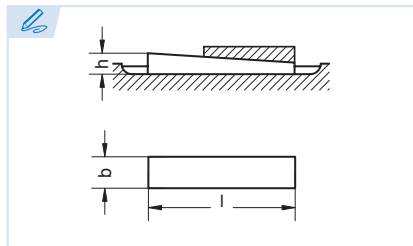
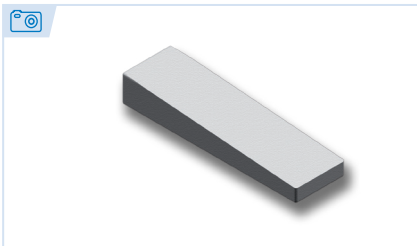


DIN 6886 A

Chaveta plana inclinada - Forma A

Taper Key - Form A
Clavette inclinée - Forme A
Chaveta plana inclinada - Forma A

Extremos redondeados (2)
Round Ends (2)
Bouts ronds (2)
Extremidades arredondadas (2)



DIN 6886 B

Chaveta plana inclinada - Forma B

Taper Key - Form B
Clavette inclinée - Forme B
Chaveta plana inclinada - Forma B

Extremos rectos (2)
Square Ends (2)
Bouts droits (2)
Extremidades retas (2)



Chavetas especiales

Special Keys
Clavettes spéciales
Chavetas especiais

Podemos ofrecer chavetas especiales en distintas formas y materiales, desde una unidad a largas series.
We can offer special keys in different forms and materials that range from one unit to large series.
Sur demande clavettes spéciales ou sur plan, de l'unité à la grande série.
Podemos oferecer chavetas especiais em diferentes formas e materiais, desde uma única unidade até grandes séries.